

THE CONCH

Aloha!

As we step into a brand new year, we extend our heartfelt wishes for a prosperous and joyful 2025. Your dedication has been the cornerstone of our success, and we are excited to continue this journey together. May this year bring you new opportunities, personal growth, and memorable moments. Let's embrace the challenges and celebrate the achievements that lie ahead. Thank you for your support and commitment. Here's to a year filled with inspiration and collaboration!

We Hear You!

Great news everyone! We now have hearing amplification devices for people who have a hard time hearing what's being said at the meetings. These "free for you to use" devices will be available at all HPOA community meetings and can be found on the check-in table.

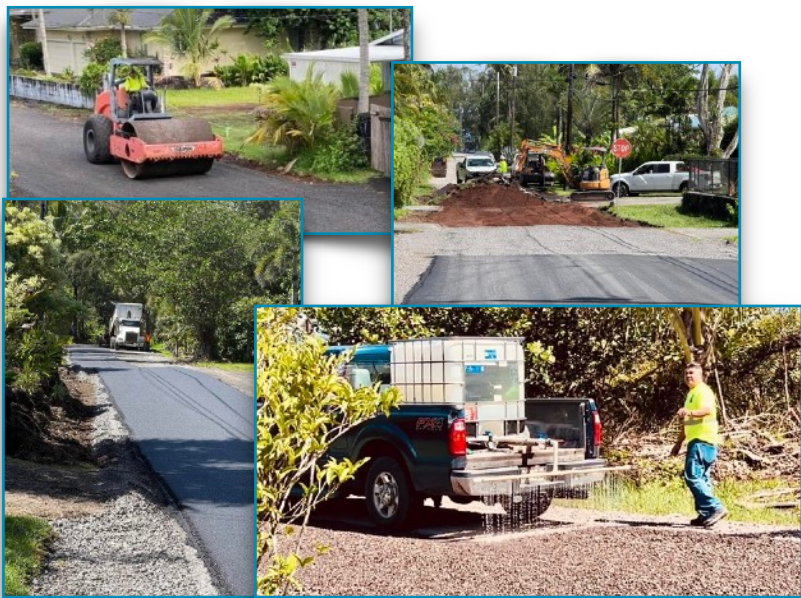


The devices are cleaned and sanitized after each use. Just please remember to return them at the end of the meeting.

Roads, Roads, Roads

Get the current updates from Larry, our GM.

Ala Heiau Paving



Easements – What's Allowed

HPOA has easements along each road in HPP. The easement along the avenues (the cross street) is the ten feet from your property line towards the road. This means that from your corner pin property marker, the easement is the first 10 feet. The road is to be 20 feet wide and then another 10-foot easement. The main roads have a 20 foot easement along the side of the corner lots in addition to the 10 foot easement on the avenues.

When you build a wall or install a fence you should always be sure you don't construct anything in the easement. Nothing permanent is permitted to be erected or planted in the easement except grass. No trees, plants, shrubs or rocks are permitted within the easement. The owner is responsible for making sure that anything planted within the property line is trimmed and pruned to not hang over the easement.

Some owners have set their fence line back 15 feet from the road so that they can plant within the 5 feet before getting to the easement. Those owners are responsible for keeping the foliage out of the easement and maintained.

With 144 miles of roads, it has been difficult to oversee these rules but it is the intention of the Association to make sure they are adhered to and enforcement will be at the expense of the lot owner.

Mail Parks Beautification

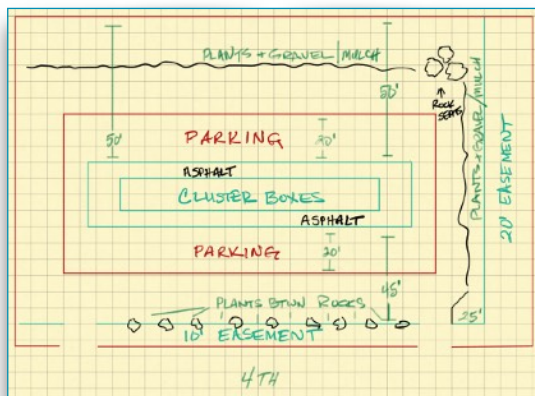
Our new committee began in June 2024 to beautify the land around mailboxes on 4th, 6th, 14th, and 16th Ave by planting flowers, shrubs, and trees with community help.

We'll prioritize native, low-maintenance plants since there's no water source. This effort aims to create a pleasant area for neighbors to meet. In the future, we may add bulletin boards for community notices. We'll start with the 4th/Kaloli site, then move to 6th/Maku'u. Once these are done, we'll focus on 14th and 16th Ave.

Our first "Volunteer Work Day" was at 4th/Kaloli October 19, 2024, to clear and prepare the area for plants.

Our **new** work schedule is 4th & Kaloli Monday, Wednesday and Friday from 4pm until 6pm and the 2nd and 4th Saturdays from 7am-11am. 6th & Makuu is on 1st and 3rd Sundays from 7am-11am.

To volunteer, fill out the form on the HPPOA website and submit it to Shelli at the office so we can contact you about workdays. Donations are welcome through the HPPOA non-roads budget. For questions, please email us at HPPMailParks@gmail.com.



4th & Kaloli

Why Are They Widening the Road?

Over time, lawns and bushes have grown into the roadway margins so they needed to be cut back to allow for the 20 foot wide road.

Aloha Neighbors –

The subject of our unpaved roads has been the elephant in the room for so many years. For far too long the response from some people was “you bought on an unpaved road, so live with it”.

Well, that is not the way we want to do business!

~ This past year we increased the road maintenance budget by 50%. This allows us to meet EPA standards which recommends that a new base of course rock be laid down annually to minimize fugitive dust and have a solid roadway to drive on. Previous to 2023, it had been a two year wait for full road maintenance.

~ We have also added a program to apply, upon their request, Calcium Chloride to the roads fronting owners’ lots. We have tested the product and it appears to be very effective in suppressing dust. Application request forms can be found on the HPPOA.net website under the heading of Roads Information or you can stop by the HPPOA office.

~ A new water truck has arrived and is currently servicing our roads. If your road gets too dusty please fill out and submit the form on the website - HPPOA.net and the road crew will get out there ASAP.

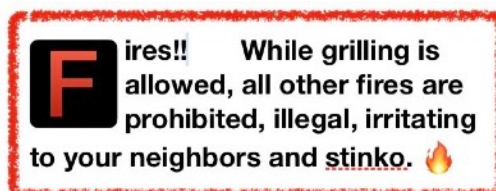
We have also just taken delivery of a new sidearm mower to help keep up on the easements.

Last, but certainly not least, paving continues and will accelerate when the bond is paid off in 12 months.

If anyone has any ideas or information to make further improvements regarding road maintenance, please share them with the board.

A big mahalo to our General Manager Larry Torres and the road crew for all their hard work.

Submitted by J. Finley, HPPOA VP and District 9 Rep



A New County Park in HPP

The Department of Parks & Recreation hosted a community meeting on Wednesday, Oct. 2, 2024 to discuss plans for a new district park proposed for the Hawaiian Paradise Park (HPP) subdivision in Kea'au.

The new park would be developed on a County-owned, 20-acre parcel bordered by Kaloli Drive, 25th Avenue and 26th Avenue. The park is principally intended to serve residents of HPP and the Puna District and support healthy lifestyles and healthy families.

The public meeting was a continuation of the master planning process for the proposed park. The meeting included a discussion of the project's Environmental Assessment process and provided opportunities for the public to share feedback on the design and amenities to be offered at the park.

Please visit <https://ssf.m.konveio.com/hpp-new-district-park> or scan the QR Code below to learn more about the project background and to sign up for notifications about important project updates, including when the Draft Environmental Assessment is published and available for public comment.



Blessing the Mail Parks

On October 1, 2024 our four mail parks on 4th / Kaloli, 6th / Maku'u, 14th / Kaloli and 16th / Maku'u were blessed by Kumu Kimo Awai. Each of the ceremonies was inspiring and solemn and slightly different from the other. This traditional blessing was generously joined by Kumu Robbie and loving members of her Halau. All of these ceremonies began with the deep and familiar sound of the conch shell (pu) blown by Kumu Robbie. The feeling of peace, tranquility and love was deep with Kumu Kimo's chant as he sprinkled salt water in all 4 directions. Throughout the ceremony Kumu Kimo explained to those present what



everything meant. Community members watched with tears in their eyes in awe and came together as we joined this blessing by holding a single lei over 40 feet long. A member of Kumu Robbie's Halau came forward with an offering of a kukui tree to be planted at each mail park site. The kukui tree is a symbol of enlightenment, protection, guidance and peace; making it fitting for our mail parks. At the 16th/ Maku'u site Keoni Kealoha Alvarez was present dressed traditionally. Kumu Kimo kindly gifted a very special offering to Keoni, who so proudly and passionately stood in honor to protect his Hawaiian ancestors. It was beautiful! Our community then

gathered at the HPPOA Community Center to take in beautiful hula, share yummy pupu's and to share our thoughts after this heartfelt and beautiful Hawaiian blessing.



Notes From Your Neighbors

Aloha,

We are in full support of USPS mailboxes!! Even though we have to go through the tedious process of changing our address, it will be very worth it to have our home address be our mailing address. In the long run, it will save us time and hassle when dealing with all forms of shipping.

We are excited to have a safer place to check our mail that is even protected from the weather! We hope that this transition happens sooner than later.

Mahalo for all your hard work and efforts to get the Mail parks built. We hope that the Mail parks will also include open space, park-like features at some point after the mailboxes and roofing is completed and the parks are in use. Perhaps each mail park could offer something unique, Like Frisbee golf, or a par course, or children's play area? How about a swimming pool?

Thank you,

Sherri Thal and Brent Magstadt, 8th Ave

Dear Councilwoman Ashley Kierkiewicz, My name is Angelo Osuna and I'm in 8th grade at Kea'au Middle School. I think adding a park would be an excellent choice. It would add a great feature for Hawaiian Paradise Park. I mean the name literally has "park" in it. Also imagine all of the little children of HPP. We have an existing park but there really isn't much to it. They would be so happy that their parents would say "yes, of course, it's so convenient that you can ride your bike to the park." As it is now, the children are hearing, "no, I'm not going to drive you all the way to Pahoa to the park." With a baseball field and a covered playcourt, there will be baseball teams and volleyball teams and families won't have to travel to other towns for their children to be able to be part of teams like that. Overall this would be a great experience for families and would be a big success.

Aloha,

Angelo Osuna

cc: Parks and Recreation Director Maurice Messina & HPPOA

Dear Editor,

This letter pertains to the front-page-above-the-fold article entitled, "Finally, a park for HPP?" that was published on Friday, Sept. 20. I'm writing to thank the Hawaii Tribune Herald for the coverage and the hope that, after all these years, Hawaiian Paradise Park will finally get a much-needed park space. Newcomers to HPP may not be aware that the community board, in 2016, formally rejected the County of Hawaii's proposal for a park and that's how the William "Billy" Kenoi Park came to be. Your article noted that HPP has 13,000 residents and is growing, so there is no time like the present to pursue a park for this community. Sadly, by the time this park is built, my children will be grown. But for the sake of the next generation of children that are rising up, we need opportunities for them to have a neighborhood park for them to toss around a ball or play a scheduled baseball game. They need a place to hold a birthday party near their home. And we adults need a walking path to safely exercise without someone's unchained and vicious animal attacking us, which sadly happens all too often in Puna.

I hope for our community's sake that this plan on paper really does come to fruition. I'll see my neighbors at the community meeting on Oct. 2. I will be there with bells on to voice my support for this project.

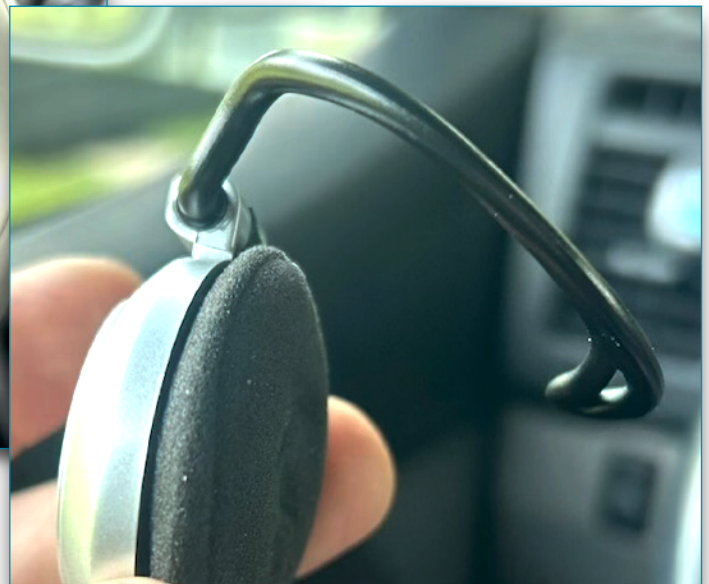
Mahalo nui loa.

Sincerely, Tiffany Edwards Hunt

CC Puna Councilwoman Ashley Kierkiewicz and Maurice Messina, County of Hawaii Parks and Recreation Director, Hawaiian Paradise Park Owners Association



Food Pantry



New Hearing Devices